

Za tehnično podporo ali pomoč pokličite
090-6009



Zebra LI2208 Quick Start Guide

Več informacij: <http://bit.ly/citalec-LI2208>

Vprašanja? Kontaktirajte naše strokovnjake



090-6009



servis@info-kod.si

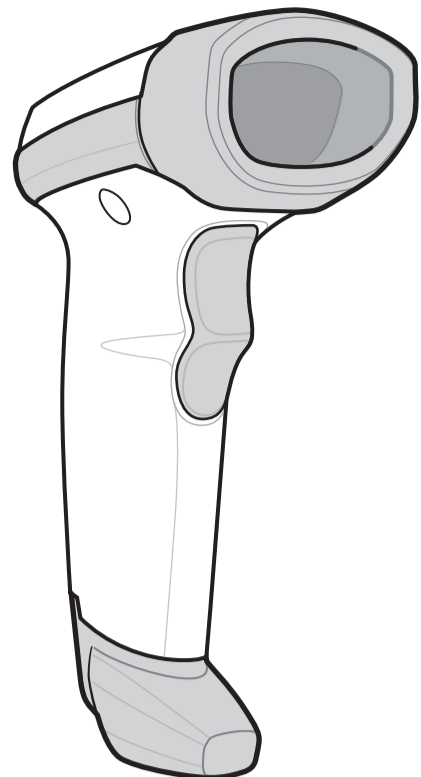


<http://www.info-kod.si>

Ponedeljek – Petek od 9:00 do 15:00

LI2208 LINEAR IMAGER QUICK START GUIDE

<http://www.motorolasolutions.com/LI2208> See Product Reference Guide for detailed information



POST IN WORK AREA

SET DEFAULTS / ENTER KEY BAR CODES

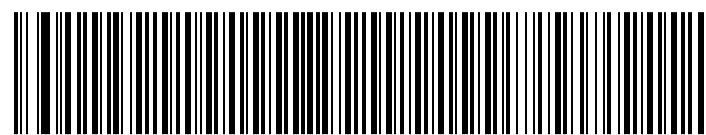
SET DEFAULTS



RETURN TO FACTORY DEFAULTS

ADD AN ENTER KEY (Carriage Return/Line Feed)

To add an Enter key after scanned data, scan the bar code below.



ADD AN ENTER KEY (CARRIAGE RETURN/LINE FEED)

TAB KEY BAR CODE

ADD A TAB KEY

To add a Tab key after scanned data, scan the bar code below.



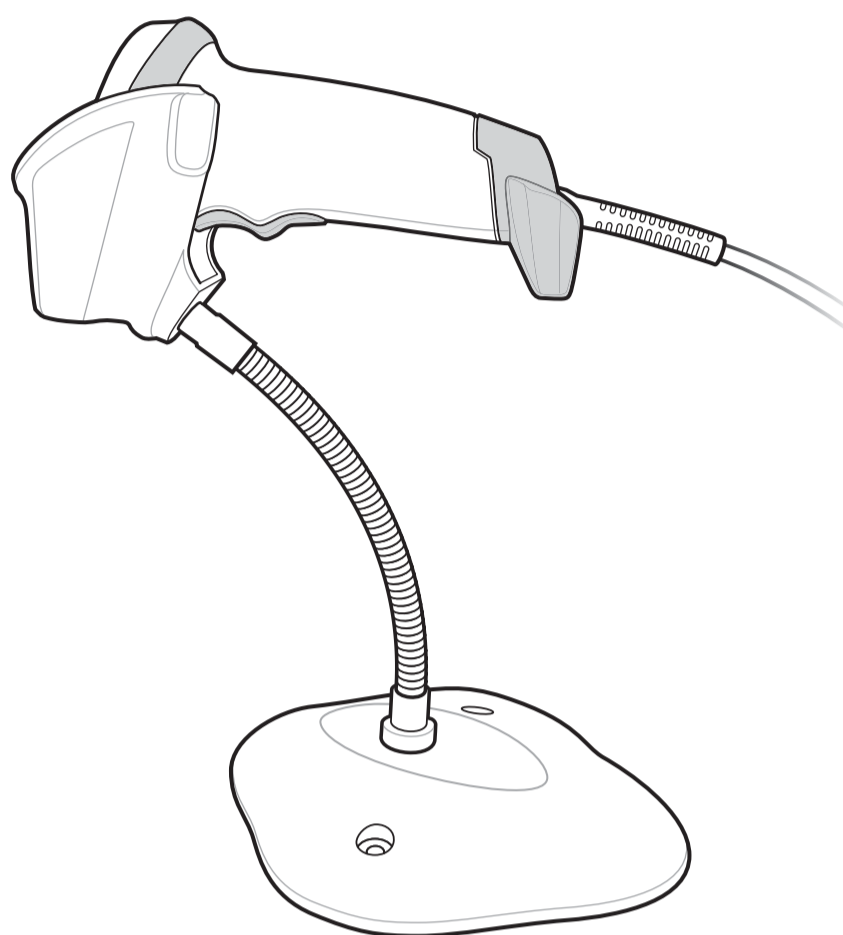
ADD A TAB KEY

SCANNER FEATURES



- 1 Scan Window
- 2 Scan Trigger
- 3 LED
- 4 Beeper

PRESENTATION MODE



USB CAPS LOCK OVERRIDE BAR CODE



USB - OVERRIDE CAPS LOCK KEY (ENABLE)

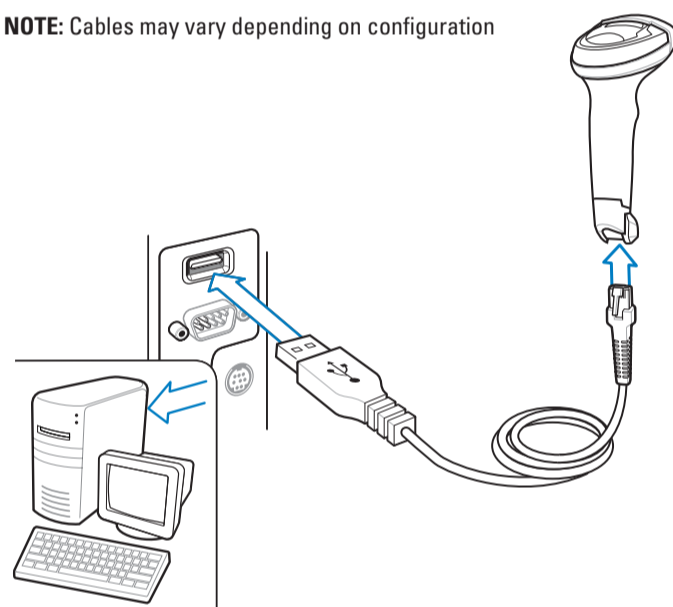


*USB - DO NOT OVERRIDE CAPS LOCK KEY (DISABLE)

STEP 1 - CONNECT HOST INTERFACE

USB

NOTE: Cables may vary depending on configuration



STEP 2 - SET UP INTERFACE (Scan Host Bar Codes)

USB

Scan **ONE** of the bar codes below

The interface cable automatically detects the host interface type and uses the default setting. If the default (*) does not meet your requirements, scan another host bar code below.



*USB KEYBOARD (HID)



IBM TABLE TOP USB



SNAPI WITHOUT IMAGING



USB CDC Host



IBM HAND-HELD USB



IBM OPOS (IBM HAND-HELD USB with FULL SCAN ENABLE)

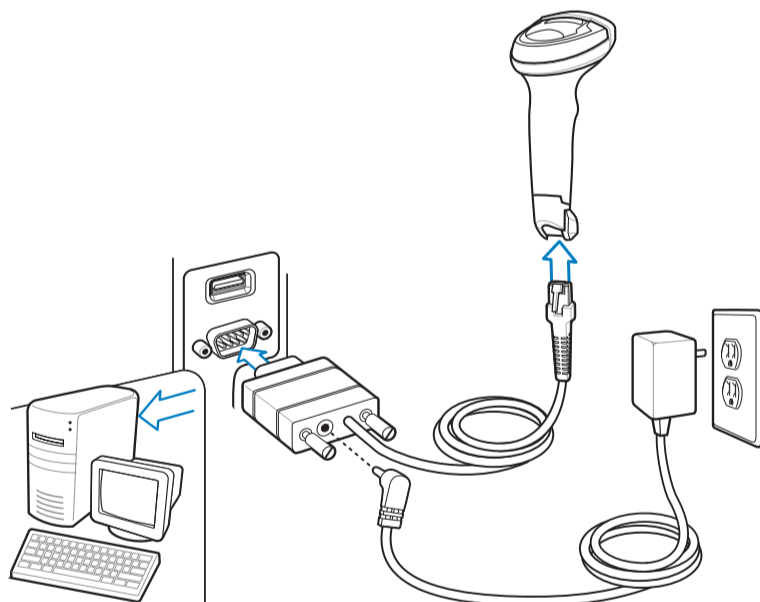


SIMPLE COM PORT EMULATION



TOSHIBA TEC Host

RS-232



RS-232

Scan **ONE** of the bar codes below

The interface cable automatically detects the host interface type and uses the default setting. If the default (*) does not meet your requirements, scan another host bar code below.



*STANDARD RS-232



NIXDORF RS-232 MODE A



ICL RS-232



NIXDORF RS-232 MODE B

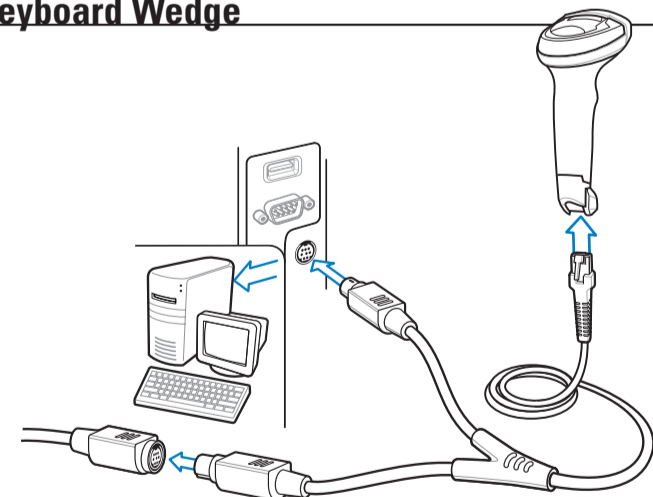


OPOS/JPOS



FUJITSU RS-232

Keyboard Wedge



Keyboard Wedge

Scan a bar code below

The Auto-Host Detect Cable feature automatically detects the host interface type and uses the default setting. If the default (*) does not meet your requirements, scan the IBM PC/AT and IBM PC COMPATIBLE bar code below.

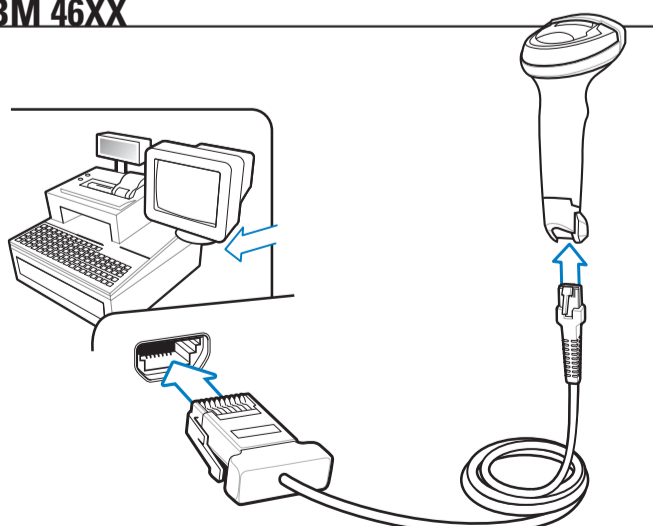


*IBM AT NOTEBOOK



IBM PC/AT and IBM PC COMPATIBLE

IBM 46XX



IBM 46XX

Scan **ONE** of the bar codes below

The Auto-Host Detect Cable feature automatically detects the host interface type, but there is no default setting. Scan one of the bar codes below to select the appropriate port.



NON-IBM SCANNER EMULATION (PORT 5B)



TABLE-TOP SCANNER EMULATION (PORT 17)



HAND-HELD SCANNER EMULATION (PORT 9B)

123Scan²

ABOUT 123Scan²

123Scan² is an easy-to-use, PC-based software tool that enables rapid and easy customized setup of a scanner via a bar code or USB cable. For more information, visit: <http://www.motorolasolutions.com/123Scan>.

UTILITY FUNCTIONALITY

- Device Configuration
- Electronic Programming (USB Cable)
- Programming Bar Code(s)
- Data View – Scan Log (Display Scanned Bar Code Data)
- Access Asset Tracking Information
- Upgrade Firmware and View Release Notes
- Remote Management (SMS Package Generation)

